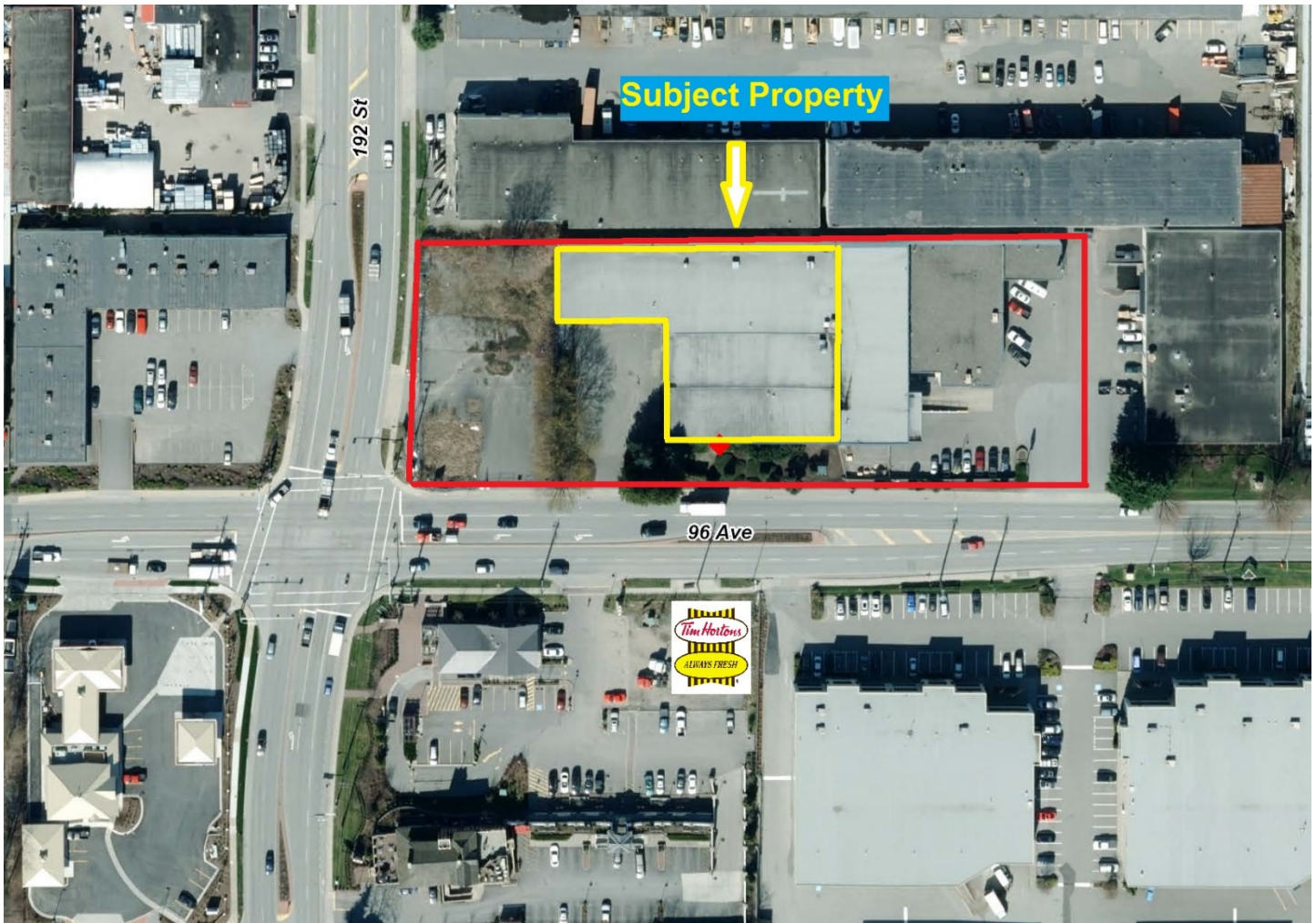


FOR LEASE

19239 - 96 Avenue, Surrey
Port Kells Industrial



23,618 Square Feet

LOCATION

The subject property is located at the northeast corner of the intersection of 96 Avenue and 192 Street and provides easy access to both the Trans-Canada Highway and the Golden Ears Bridge.

Building being extensively renovated – can be demised into three units

LEASE RATE

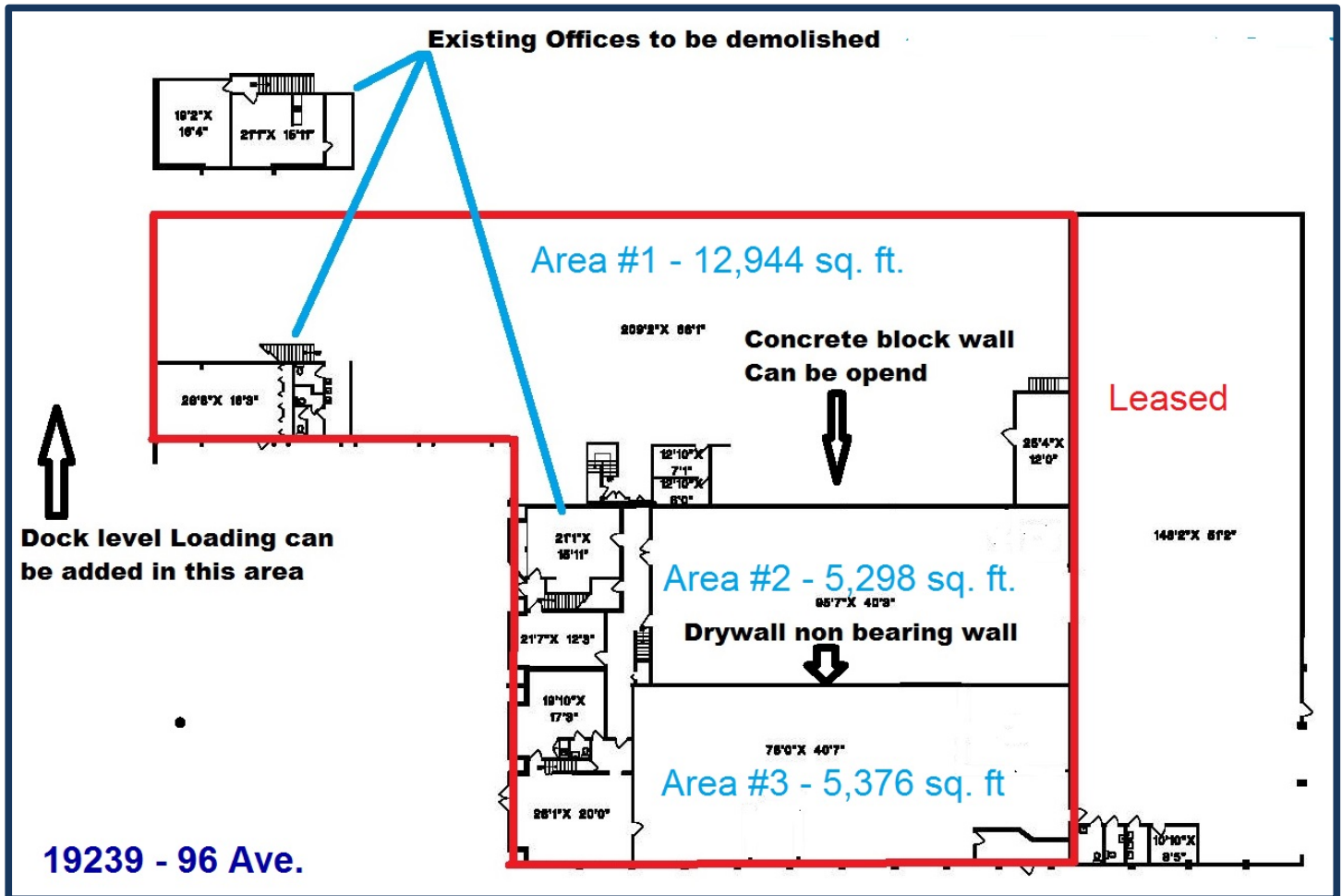
\$8.50 per sq. ft. net

TAXES & OPERATING EXPENSES

\$2.50 per sq. ft.

FOR LEASE

19239 – 96 Avenue, Surrey
Port Kells Industrial



Features

- Grade and Dock level loading
- 3 phase power
- 24 ft. ceilings
- Excellent on-site parking
- Signage available

Zoning

IL – Light Industrial Allows a wide range of uses – manufacturing, assembly and distribution

Premises – can be divided into three units

Alfred A. Marchi
Paragon Realty Corporation
#101 – 5550 – 152nd Street
Surrey, BC V3S 5J9
Office: 604-576-3868 Fax: 604-576-3868
Email: alfmarchi@paragonrealty.ca
www.paragonrealty.ca